

# LMP 307T

## Level and Temperature Transmitter

Stainless Steel Sensor

accuracy according to IEC 60770:  
standard: 0.35 % FSO  
option: 0.25 % FSO

### Nominal pressure / nominal temperature

from 0 ... 1 mH<sub>2</sub>O up to 0 ... 250 mH<sub>2</sub>O

from 0 ... 30 °C up to 0 ... 70 °C

others on request

### Output signals

2-wire: 4 ... 20 mA (pressure)

2-wire: 4 ... 20 mA (temperature)

### Special characteristics

- ▶ diameter 27 mm
- ▶ separate output signals for pressure and temperature ranges
- ▶ easy handling
- ▶ low maintenance and wiring costs

### Optional versions

- ▶ different kinds of cables
- ▶ different kinds of seal materials
- ▶ customer specific versions

submersible probe LMP 307T for continuous level and temperature measurement in water and in clean to lightly-soiled liquids.

The advantage: simultaneous recording of level and temperature with separate independent signal amplification. The maintenance and wiring costs are considerably reduced.

In addition to classical signal processing of the level, an additional signal circuit independent of the level which converts the temperature signal into a 4 ... 20 mA analogue signal in 2-wire technology is provided.

Typical application areas are, for example, drinking water purification, monitoring of rainwater overflow basins and river courses, in addition to level measurement in containers or tank batteries.

### Preferred areas of use are



Water / filtrated sewage  
e.g. drinking water system

water recycling



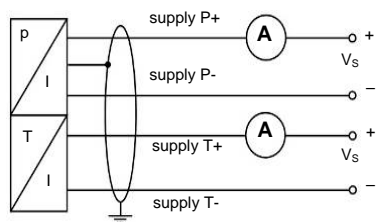
Fuel / Oil  
e.g. tank farm





**Wiring diagram**

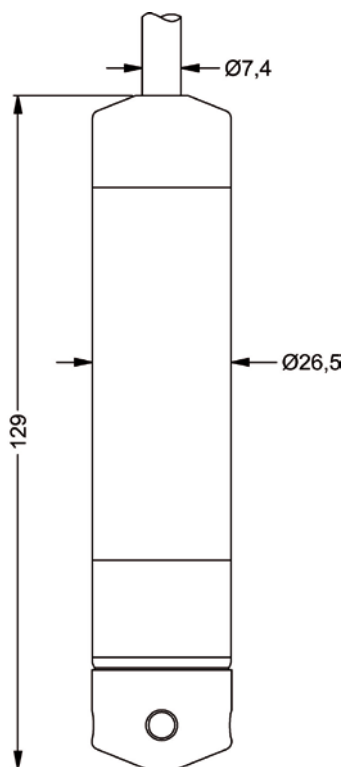
2x2-wire-system (current)




**Pin configuration**

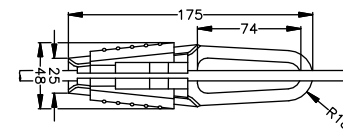
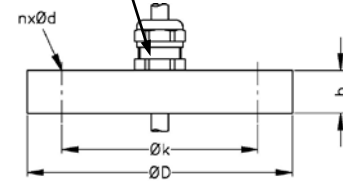
Electrical connection	cable colours (DIN 47100)
Supply P+	wh (white)
Supply P-	bn (brown)
Supply T+	gy (gray)
Supply T-	pk (pink)
Shield	ye/gn (yellow / green)

**Dimensions (in mm)**



Mounting flange with cable gland		
<b>Technical data</b>		
Suitable for	all probes	
Flange material	stainless steel 1.4404 (316L)	
Material of cable gland	standard: brass, nickel plated on request: stainless steel 1.4305 (303); plastic	
Seal insert	material: TPE (ingress protection IP 68)	
Hole pattern	according to DIN 2507	
<b>Version</b>	<b>Size (in mm)</b>	<b>Weight</b>
DN25 / PN40	D = 115, k = 85, b = 18, n = 4, d = 14	1.4 kg
DN50 / PN40	D = 165, k = 125, b = 20, n = 4, d = 18	3.2 kg
DN80 / PN16	D = 200, k = 160, b = 20, n = 8, d = 18	4.8 kg
<b>Ordering type</b>		<b>Ordering code</b>
DN25 / PN40 with cable gland brass, nickel plated		ZMF2540
DN50 / PN40 with cable gland brass, nickel plated		ZMF5040
DN80 / PN16 with cable gland brass, nickel plated		ZMF8016
<b>Terminal clamp</b>		
<b>Technical data</b>		
Suitable for	all probes with cable $\varnothing$ 5.5 ... 10.5 mm	
Material	standard: steel, zinc plated optionally: stainless steel 1.4301 (304)	
Weight	approx. 160 g	
<b>Ordering type</b>		<b>Ordering code</b>
Terminal clamp, steel, zinc plated		Z100528
Terminal clamp, stainless steel 1.4301 (304)		Z100527
<b>Display program</b>		
<p><b>CIT 200</b> Process display with LED display</p> <p><b>CIT 250</b> Process display with LED display and contacts</p> <p><b>CIT 300</b> Process display with LED display, contacts and analogue output</p> <p><b>CIT 350</b> Process display with LED display, bargraph, contacts and analogue output</p> <p><b>CIT 400</b> Process display with LED display, contacts, analogue output and Ex-approval</p> <p><b>CIT 600</b> Multichannel process display with graphics-capable LC display</p> <p><b>CIT 650</b> Multichannel process display with graphics-capable LC display and datalogger</p> <p><b>CIT 700</b> Multichannel process display with graphics-capable TFT monitor, touchscreen and contacts</p> <p><b>PA 440</b> Field display with 4-digit LC display</p> <p>For further information please contact our sales department or visit our homepage: <a href="http://www.bdsensors.com">http://www.bdsensors.com</a></p>		

cable gland M16x1.5 with seal insert (for cable- $\varnothing$  4 ... 11 mm)



This data sheet contains product specification, properties are not guaranteed. Subject to change without notice.





## Website

[www.sensorsone.com](http://www.sensorsone.com)

## Email

enquiries [at] sensorsone.com

## QR Code

Save the SensorsONE website address to your mobile smartphone by scanning this QR code

